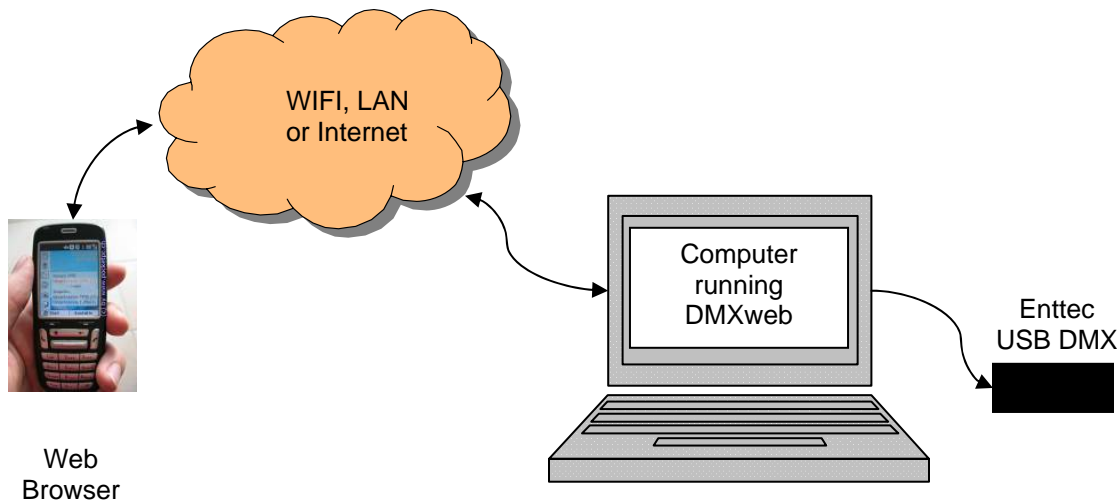


# Chromakinetics DMXweb Ver 1.1

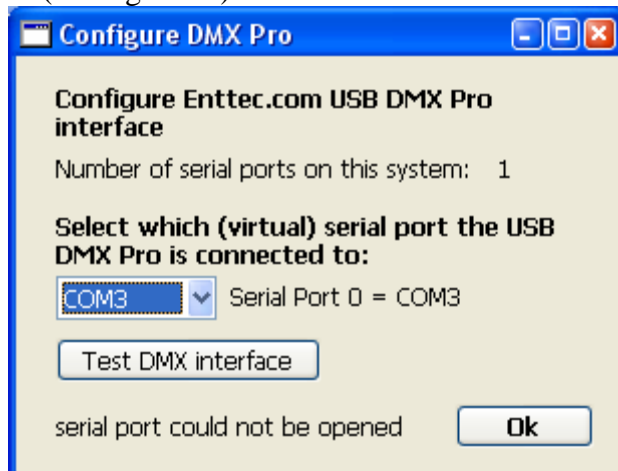
## StageConsole Webserver

By Glenn Meader  
glenn@chromakinetics.com  
www.chromakinetics.com

**DMXweb** is a program that allows you to control stage lighting remotely via a web page over the Internet or a local area network (LAN). DMXweb is a small, simple web server that responds to requests from web browsers such as Microsoft Internet Explorer and Apple Safari. You can use a Pocket PC or Palm or cellphone that has a web browser to control your lights by surfing to the webpage provided by DMXweb.



DMXweb controls lighting with an Enttec USB DMX Pro interface. ([www.enttec.com](http://www.enttec.com)). When you start DMXweb, you need to set the port that the Enttec interface is connected to (Config menu).

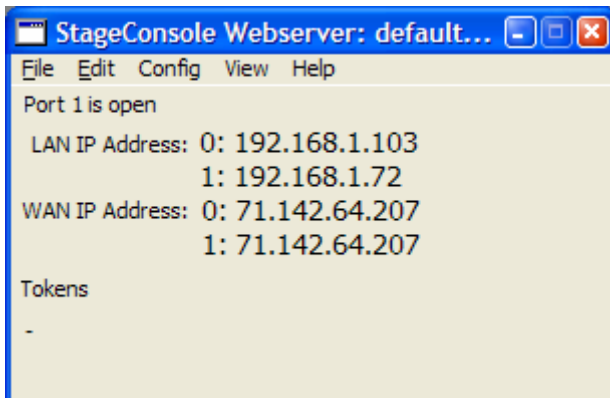


When you run DMXweb, it starts listening on the net for HTTP requests. If you are running another webserver (such as IIS or Apache) on your computer, DMXweb may fail to work.



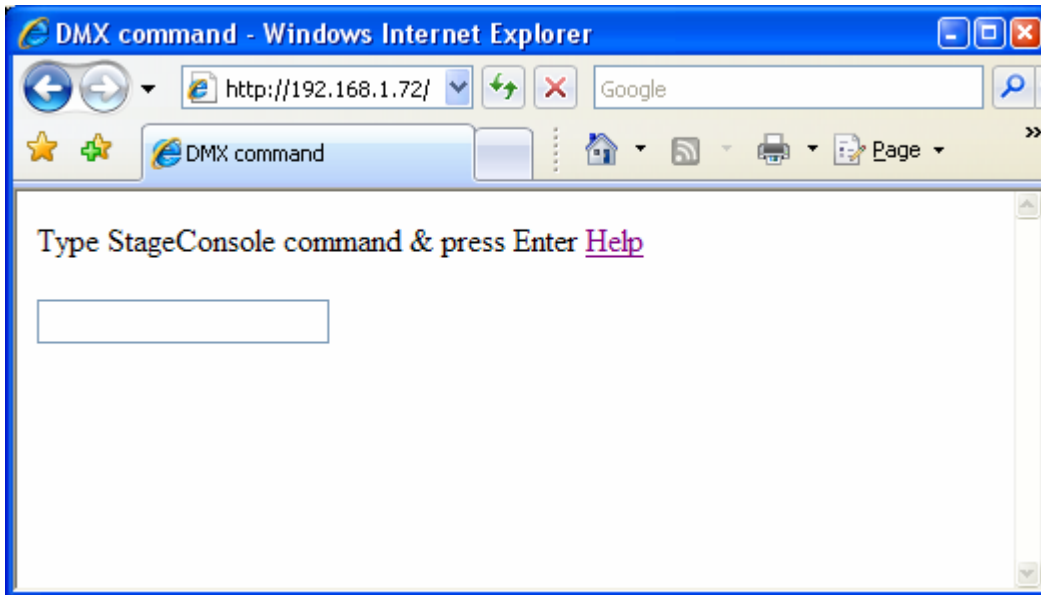
Normally webserver listen on port 80. You can set the port number to another number if there is some conflict. (Config menu)

DMXweb detects the LAN and WAN IP addresses of the computer it is running on and displays them so that you know what URL address to enter into your browser. These addresses are the large numbers in the figure below.



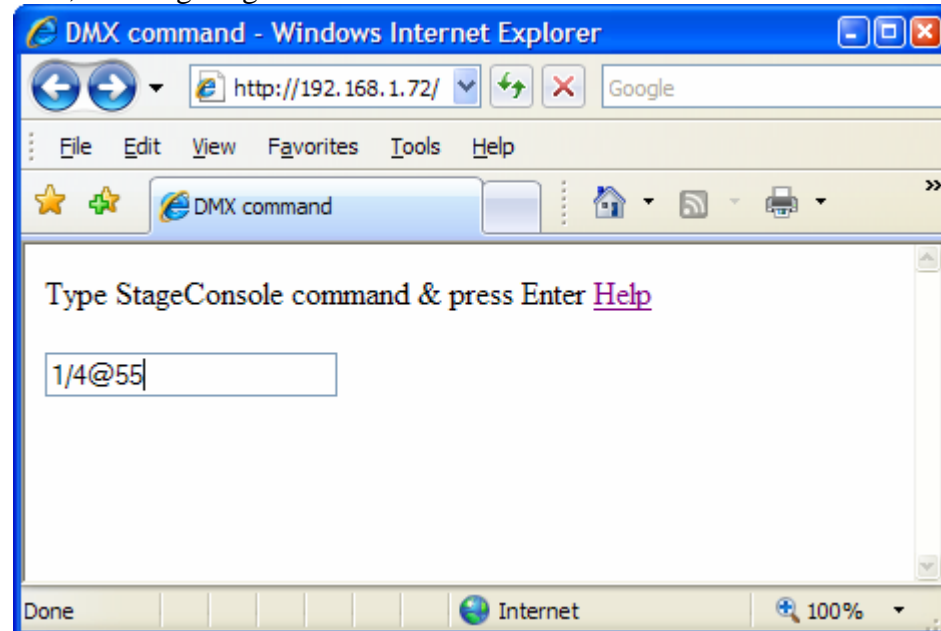
The LAN address is the local Ethernet address (if you have a router or are using WIFI locally). The WAN address is the address of your computer on the World-Wide Web if it is connected to the Internet. If you are connecting locally (the most likely scenario) use the LAN address as your URL for your browser address. If you have more than one Ethernet adapter, multiple addresses will be shown. In the figure above there are 2 Ethernet adapters, a WIFI adapter and a normal CAT-5 wire adapter; numbered 0 and 1 respectively. The address 192.168.1.72 is the wired LAN adapter.

Here is a browser window, running on another computer displaying the page that DMXweb sends when you go to the URL **http://192.168.1.72** (use the correct numbers for *your* computer as given in the StageConsole Webserver window, above figure)



A simple form is displayed by the browser. You can now enter a command in the text field. Press Enter to submit the command. Clicking on [Help](#) gives a page detailing the command syntax. The syntax is similar to commands on popular lighting control consoles such as ETC Express.

Here, we are giving the command to set channels 1 thru 4 to 55%:



The command will be executed by the DMXweb server and control the lights connected to it.



## Command Syntax:

*channel(s)@level*

### Keys to select channels:

<b>channel</b>	0 1 2 3 4 5 6 7 8 9
<b>AND</b>	P or p or + (plus sign)
<b>THRU</b>	T or t or / (slash or division symbol)
<b>EXCEPT</b>	E or e or - (hyphen or minus)

Enter digits for channel numbers. To select multiple channels, you can use the AND, THRU and EXCEPT keys as well.

### Keys to set levels:

<b>AT</b>	A or a or @ or * (asterisk or multiply sign)
<b>level</b>	0 1 2 3 4 5 6 7 8 9
<b>FULL</b>	F or f or enter without a level number
<b>DMX</b>	D or d – interpret level as 0-255 DMX instead of percentage

If you enter a single digit for the level, it will be interpreted as ten times that number. For example if you enter just a 4 for the level, the level will be set at 40%. To set levels below 10% you must enter a zero before the digit. For example to set a level of 5%, enter 05 as the level.

If you do not enter any channel numbers- just entering: @ level, the previously selected channels will be set.

### Examples

To select channel 34 and set it to 25%, enter:

**34@25** Enter

To select channel 504 and set it to 215 (DMX), enter:

**504@D215** Enter

Use [And] to select channel 10 and 20 and set them to 50%, enter:

**10+20@5** Enter

Use [Thru] to select a group of consecutively numbered channels, 3 thru 9 and set them to full, enter: (no level value is given after the @ symbol)

**3/9@** Enter - sets channels 3,4,5,6,7,8, and 9 to 100%

Use both [Thru] and [And] to select channels to include in a selection.

**1/5+8+11@75** Enter - sets channels 1, 2, 3, 4, 5, 8 and 11 to 75%

Use [Except] to exclude each non-consecutive channel from a selection.

**1/5-2-4@6** Enter - sets channels 1, 3, and 5 to 60%

To exclude consecutive channels from a selected group of channels, press [Except] before entering the channels to exclude. To select channel 1 thru 10 except channels 4 thru 6 and set them to 30%, enter:

**1/7-4/6@3** Enter - sets channels 1, 2, 3, and 7 to 30%